



---

## I D E A L F O R

- Weathered Look
- Interior & exterior facades
- Accent Striping
- Banding

---

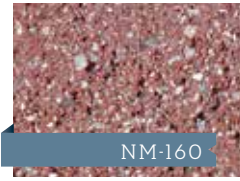
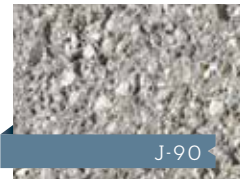
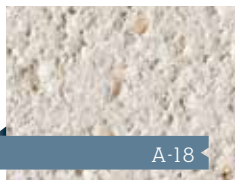
## P H O T O

### **Commercial Office Building**

Lancaster, PA

Color: NM-173

---



# ANTIQUE FINISH

## NATURAL BEAUTY, EXPOSED

Nitterhouse's Antique finish CMU has a shot blast finish that exposes the natural beauty of the aggregate, the main ingredient within the block. The finish gives the block a unique rustic texture and weathered face. Our Antique finish block is produced at the same high standards and quality as all of our other CMU products. Our Antique finish block meets ASTM-C90 standard specification for loadbearing concrete masonry units and can also be used both at and below grade. We offer a vast variety of colors and Type-S mortar. Custom colors are also available. Contact your representative for more information.