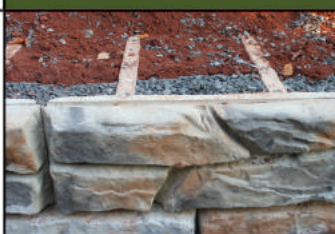


# FORIX

Precast Modular Wall System

# NITTERHOUSE

MASONRY PRODUCTS, LLC



## The unique features of the Forix retaining wall system includes:

- Triangular geometry of rear legs create an arching effect with backfill resulting in downward pressure on block units for stability
- Less freight weight and manufacturing costs when compared to solid precast concrete wall units
- Various face impressions available including natural stone finish
- Capable of turning radii
- 90 degree corner unit available
- Constructible with or without cap unit, or with traffic barrier as required by site conditions
- Automatic vertical alignment control by means of lugs on bottom of units
- Can be designed and constructed taller than conventional gravity height walls using polymer geogrid reinforcement, including mechanical (positive) geogrid connection

Forix is a concrete precast modular block retaining wall system, large in size yet economical in weight and possesses **UNPRECEDENTED ENGINEERING EFFICIENCY.**



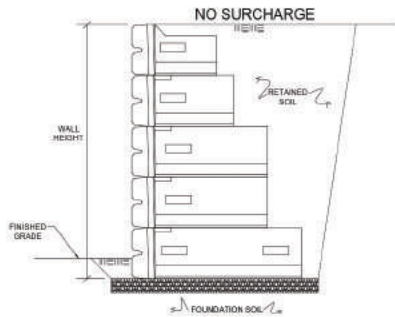
## EARTH WALL PRODUCTS

[earthwallproducts.com](http://earthwallproducts.com)

**NITTERHOUSE**  
MASONRY PRODUCTS, LLC

859 Cleveland Ave. Chambersburg, PA 17201  
717.267.4500 [www.nitterhousemasonry.com](http://www.nitterhousemasonry.com)

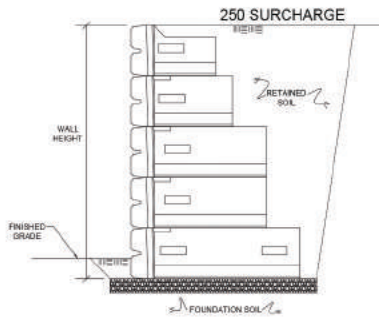




FORIX STANDARD TYPICAL CROSS SECTION

No Surcharge,  $\gamma = 120$  PCF

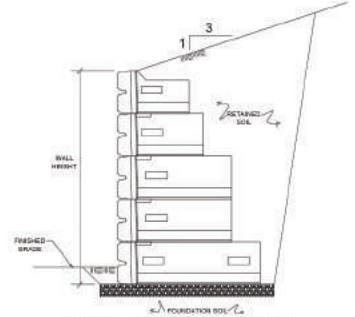
Φ = 28" Silt/Clayey Soils						Φ = 30" Sandy Soils						Φ = 34" Gravel Soils					
Wall Height	Block Size Needed					Wall Height	Block Size Needed					Wall Height	Block Size Needed				
1.5'	30"	36"	48"	60"	72"	1.5'	30"	36"	48"	60"	72"	1.5'	30"	36"	48"	60"	72"
1.5'	1	0	0	0	0	1.5'	1	0	0	0	0	1.5'	1	0	0	0	0
3.0'	2	0	0	0	0	3.0'	2	0	0	0	0	3.0'	2	0	0	0	0
4.2'	3	0	0	0	0	4.5'	3	0	0	0	0	4.5'	3	0	0	0	0
6.0'	3	1	0	0	0	6.0'	3	1	0	0	0	6.0'	4	0	0	0	0
7.5'	2	2	1	0	0	7.5'	1	4	0	0	0	7.5'	4	1	0	0	0
9.0'	2	2	1	1	0	9.0'	3	2	1	0	0	9.0'	5	0	0	0	0
10.5'	1	0	2	4	1	10.5'	3	2	1	1	0	10.5'	3	2	2	0	0
12.0'	1	1	1	0	0	12.0'	2	1	1	4	0	12.0'	1	1	6	0	0
13.5'						13.5'	2	1	2	2	2	13.5'	5	2	2	2	0
15.0'						15.0'	1	0	0	1	8	15.0'	1	0	1	8	0
16.5'						16.5'						16.5'	2	2	3	2	2
18.0'						18.0'						18.0'	1	0	1	1	9
19.5'						19.5'						19.5'					
21.0'						21.0'						21.0'					
22.5'						22.5'						22.5'					



FORIX STANDARD TYPICAL CROSS SECTION

250 PSF Surcharge,  $\gamma = 120$  PCF

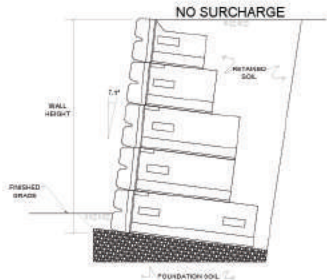
Φ = 28" Silt/Clayey Soils						Φ = 30" Sandy Soils						Φ = 34" Gravel Soils					
Wall Height	Block Size Needed					Wall Height	Block Size Needed					Wall Height	Block Size Needed				
30"	30"	36"	48"	60"	72"	30"	30"	36"	48"	60"	72"	30"	30"	36"	48"	60"	72"
1.5'	1	0	0	0	0	1.5'	1	0	0	0	0	1.5'	1	0	0	0	0
3.0'	0	2	0	0	0	3.0'	0	2	0	0	0	3.0'	1	1	0	0	0
4.5'	0	2	1	0	0	4.5'	0	2	1	0	0	4.5'	1	2	0	0	0
6.0'	0	2	1	1	0	6.0'	0	2	2	0	0	6.0'	1	3	0	0	0
7.5'	0	2	1	1	1	7.5'	0	2	2	1	0	7.5'	1	2	2	0	0
9.0'	0	2	0	2	2	9.0'	0	1	1	4	0	9.0'	1	2	3	0	0
10.5'						10.5'	0	2	1	2	2	10.5'	1	2	2	2	0
12.0'						12.0'						12.0'	1	2	0	5	0
13.5'						13.5'						13.5'	1	2	2	2	2
15.0'						15.0'						15.0'	1	1	1	2	5
16.5'						16.5'						16.5'					
18.0'						18.0'						18.0'					
19.5'						19.5'						19.5'					
21.0'						21.0'						21.0'					
22.5'						22.5'						22.5'					



FORIX STANDARD TYPICAL CROSS SECTION

3:1 Surcharge,  $\gamma = 120$  PCF

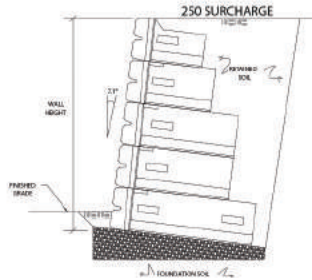
Φ = 28" Silt/Clayey Soils						Φ = 30" Sandy Soils						Φ = 34" Gravel Soils					
Wall Height	30"	36"	48"	60"	72"	Wall Height	30"	36"	48"	60"	72"	Wall Height	30"	36"	48"	60"	72"
1.5'	1	0	0	0	0	1.5'	1	0	0	0	0	1.5'	1	0	0	0	0
3.0'	2	0	0	0	0	3.0'	2	0	0	0	0	3.0'	2	0	0	0	0
4.5'	2	1	0	0	0	4.5'	2	1	0	0	0	4.5'	3	0	0	0	0
6.0'	0	1	3	0	0	6.0'	0	4	0	0	0	6.0'	3	1	0	0	0
7.5'	0	0	1	4	0	7.5'	0	1	4	0	0	7.5'	2	3	0	0	0
9.0'						9.0'	0	1	1	4	0	9.0'	0	3	1	2	0
10.5'						10.5'						10.5'	2	1	4	0	0
12.0'						12.0'						12.0'	2	1	2	3	0
13.5'						13.5'						13.5'	2	1	2	2	2
15.0'						15.0'						15.0'					
16.5'						16.5'						16.5'					
18.0'						18.0'						18.0'					
19.5'						19.5'						19.5'					
21.0'						21.0'						21.0'					
22.5'						22.5'						22.5'					



FORIX STANDARD TYPICAL CROSS SECTION

7.1' Batter, No Surcharge,  $\gamma = 120$  PCF

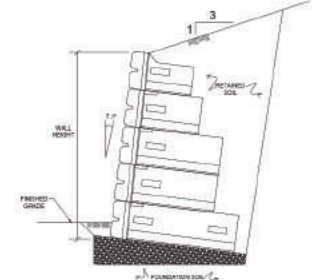
Φ = 28" Silt/Clayey Soils						Φ = 30" Sandy Soils						Φ = 34" Gravel Soils								
Wall Height		Block Size Needed				Wall Height		Block Size Needed				Wall Height		Block Size Needed						
1.5'	3.0'	30"	36"	48"	60"	72"	1.5'	3.0'	30"	36"	48"	60"	72"	1.5'	3.0'	30"	36"	48"	60"	72"
1.5'	1	0	0	0	0	0	1.5'	1	0	0	0	0	0	1.5'	1	0	0	0	0	0
3.0'	2	0	0	0	0	0	3.0'	2	0	0	0	0	0	3.0'	2	0	0	0	0	0
4.5'	3	0	0	0	0	0	4.5'	3	0	0	0	0	0	4.5'	3	0	0	0	0	0
6.0'	4	0	0	0	0	0	6.0'	4	0	0	0	0	0	6.0'	4	0	0	0	0	0
7.5'	3	2	0	0	0	0	7.5'	5	0	0	0	0	0	7.5'	5	0	0	0	0	0
9.0'	3	3	0	0	0	0	9.0'	4	2	0	0	0	0	9.0'	4	2	0	0	0	0
10.5'	3	3	1	0	0	0	10.5'	2	5	0	0	0	0	10.5'	4	3	0	0	0	0
12.0'	3	1	4	0	0	0	12.0'	4	2	2	0	0	0	12.0'	1	7	0	0	0	0
13.5'	3	2	3	1	0	0	13.5'	2	1	6	0	0	0	13.5'	4	2	2	0	0	0
15.0'	2	1	2	6	0	0	15.0'	3	3	2	2	0	0	15.0'	2	2	6	0	0	0
16.5'	2	2	1	4	2	0	16.5'	3	1	0	7	0	0	16.5'	4	3	2	2	0	0
18.0'	1	1	0	5	0	0	18.0'	3	2	1	1	7	0	18.0'	3	2	1	1	7	0
19.5'							19.5'	1	1	1	1	9	1	19.5'						
21.0'							21.0'							21.0'	3	2	1	1	7	0
22.5'							22.5'							22.5'	2	1	0	1	11	11



FORIX STANDARD TYPICAL CROSS SECTION

7.1' Batter, 250 PSF Surcharge,  $\gamma = 120$  PCF

Φ = 28" Silt/Clayey Soils						Φ = 30" Sandy Soils						Φ = 34" Gravel Soils					
Wall Height	Block Size Needed					Wall Height	Block Size Needed					Wall Height	Block Size Needed				
1.5'	1	0	0	0	0	1.5'	1	0	0	0	0	1.5'	1	0	0	0	0
3.0'	2	0	0	0	0	3.0'	2	0	0	0	0	3.0'	2	0	0	0	0
4.5'	2	1	0	0	0	4.5'	2	1	0	0	0	4.5'	3	0	0	0	0
6.0'	1	3	0	0	0	6.0'	2	2	0	0	0	6.0'	3	1	0	0	0
7.5'	2	2	1	0	0	7.5'	1	4	0	0	0	7.5'	3	2	0	0	0
9.0'	2	0	4	0	0	9.0'	2	3	1	0	0	9.0'	2	4	0	0	0
10.5'	2	1	1	3	0	10.5'	2	3	2	0	0	10.5'	3	2	2	0	0
12.0'	2	2	1	1	2	12.0'	2	3	2	1	0	12.0'	2	1	5	0	0
13.5'	2	1	1	1	4	13.5'	2	3	2	2	0	13.5'	3	2	2	2	0
15.0'						15.0'	0	1	0	9	0	15.0'	2	1	2	6	0
16.5'						16.5'	2	2	1	2	4	16.5'	3	2	2	2	2
18.0'						18.0'						18.0'	3	2	2	1	5
19.5'						19.5'						19.5'	1	1	1	2	8
21.0'						21.0'						21.0'					
22.5'						22.5'						22.5'					



FORIX STANDARD TYPICAL CROSS SECTION

7.1' Batter, 3:1 Surcharge,  $\gamma = 120$  PCF

Φ = 28" Silt/Clayey Soils						Φ = 30" Sandy Soils						Φ = 34" Gravel Soils					
Wall Height	Block Size Needed					Wall Height	Block Size Needed					Wall Height	Block Size Needed				
30"	36"	48"	60"	72"		30"	36"	48"	60"	72"		30"	36"	48"	60"	72"	
1.5'	1	0	0	0	0	1.5'	1	0	0	0	0	1.5'	1	0	0	0	
3.0'	2	0	0	0	0	3.0'	2	0	0	0	0	3.0'	2	0	0	0	
4.5'	3	0	0	0	0	4.5'	3	0	0	0	0	4.5'	3	0	0	0	
6.0'	3	1	0	0	0	6.0'	4	0	0	0	0	6.0'	4	0	0	0	
7.5'	3	1	1	0	0	7.5'	4	1	0	0	0	7.5'	5	0	0	0	
9.0'	0	2	4	0	0	9.0'	3	2	1	0	0	9.0'	4	2	0	0	
10.5'	3	0	1	3	0	10.5'	2	2	3	0	0	10.5'	1	5	0	0	
12.0'	2	1	1	1	3	12.0'	3	2	1	2	0	12.0'	4	2	2	0	
13.5'						13.5'	2	1	1	5	0	13.5'	1	1	7	0	
15.0'						15.0'	2	1	1	1	5	15.0'	4	1	1	4	
16.5'						16.5'						16.5'	4	2	2	1	
18.0'						18.0'						18.0'	2	2	2	1	
19.5'						19.5'						19.5'	1	1	1	9	
21.0'						21.0'						21.0'					
22.5'						22.5'						22.5'					