



GROUND FACE NM-163 & ANTIQUE FINISH A-41

GROUND FACE FINISH

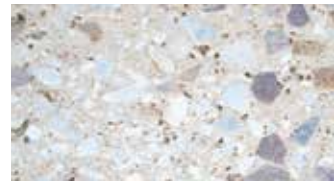
Nitterhouse's ground face CMU is produced with the highest quality materials and made with extreme attention to make every block uniform. Adding appeal and uniform finish while still allowing the natural beauty of the aggregates to show through. Not only does our ground face block meet ASTM-C90 standard specification for loadbearing concrete masonry units, they can also be used at and below grade. We offer a vast variety of colors and matching mortars. Custom colors are also available.



NM-202



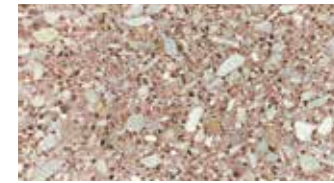
A-18



A-41



A-53



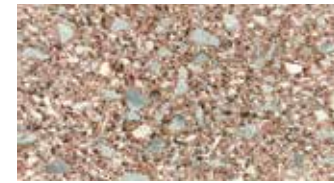
J-61



NM-200



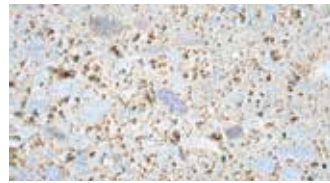
NM-203



NM-207



NM-163



NM-141



NM-196



NM-208



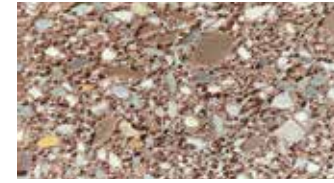
NM-165



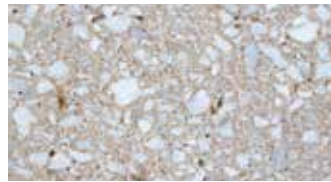
J-51



J-49



NM-135



NM-173



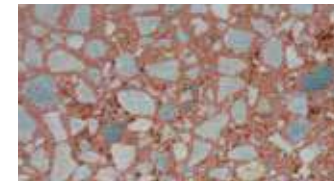
NM-189



NM-205



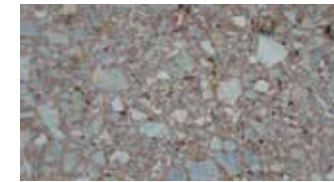
J-91



NM-207



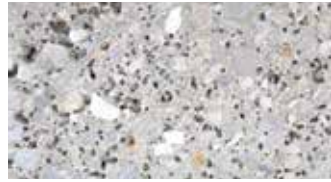
NM-179



NM-206



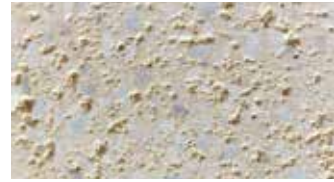
NM-204



J-15



NM-35



NM-198



NM-122



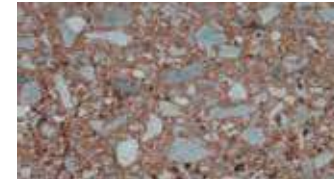
J-90



J-12



PG-166



PG-61



NM-144



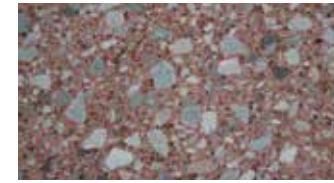
NM-152



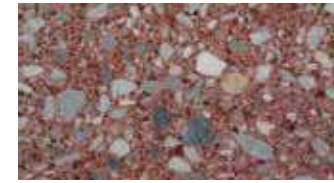
A-13



NM-167



PG-61



PG-71



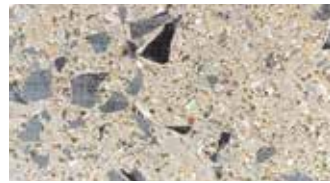
PG-61



NM-155



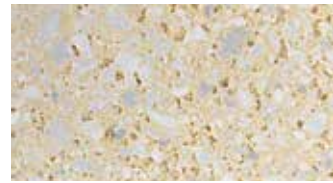
NM-191



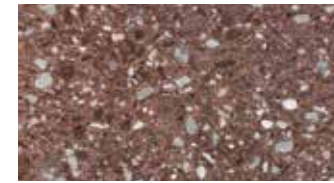
NM-06



NM-176



NM-184



NM-170



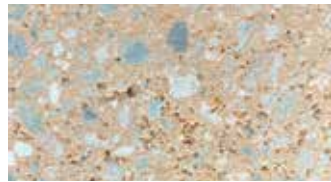
J-92



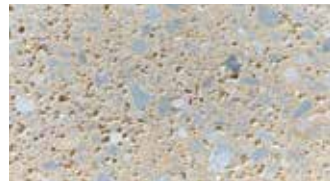
NM-199



J-55



NM-197



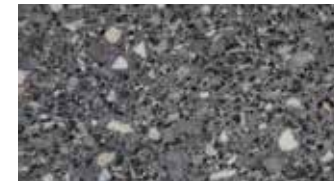
NM-188



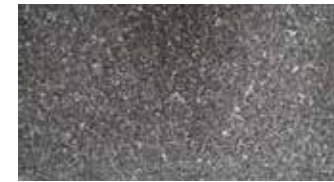
NM-185



NM-154



NM-183



NM-143



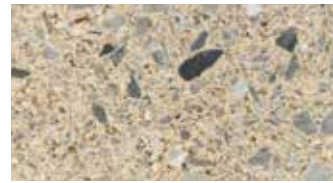
NM-169



NM-180



NM-161



NM-165

These samples are presented as a general representation of the product. Color of pieces will vary slightly from sample. Contact your Nitterhouse representative, 717-267-4500 for a physical sample.

ARCHITECTURAL BLOCK SHAPES & SIZES

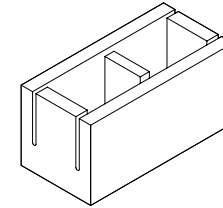
All sizes are nominal.

Special shapes and cuts are available upon request
please contact your Nitterhouse representative

OPEN-BOTTOM BOND BEAM UNIT

4" x 8" x 16"
6" x 8" x 16"
8" x 8" x 16"
10" x 8" x 16"
12" x 8" x 16"

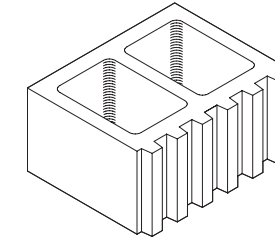
Finishes: Split, Ground, Matte, Antique



SPLIT 6 FLUTE STRETCHER UNIT

4" x 8" x 16"
6" x 8" x 16"
8" x 8" x 16"
10" x 8" x 16"
12" x 8" x 16"

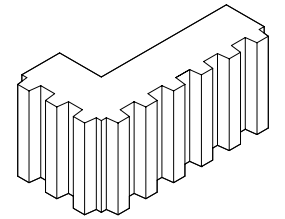
Finishes: Split Face Only



SPLIT 6 FLUTE "L": CORNER UNIT

4" x 8" x 16"

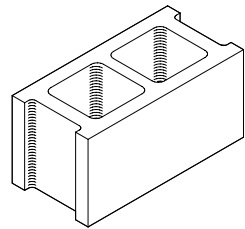
Finishes: Split Face Only



STRETCHER UNIT

4" x 8" x 16"
6" x 8" x 16"
8" x 8" x 16"
10" x 8" x 16"
12" x 8" x 16"

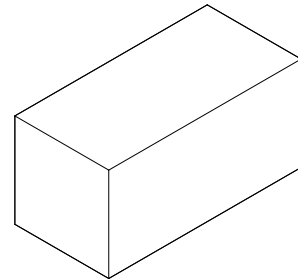
Finishes: Split, Ground, Matte, Antique



SOLID UNIT

4" x 4" x 24" 6" x 8" x 16"
4" x 8" x 24" 8" x 8" x 16"
4" x 12" x 24" 10" x 8" x 16"
4" x 8" x 16" 12" x 8" x 16"

Finishes: Split, Ground, Matte, Antique

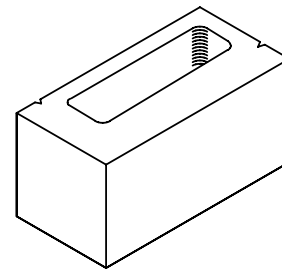


UNIVERSAL CORNER UNIT

8" x 8" x 16"

Finishes: Split Face Only

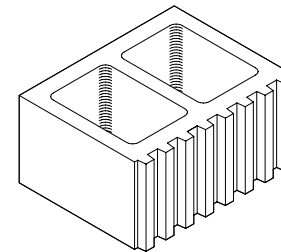
*Can be converted to a 4" x 8" x 16" Split face "L" corner at the job site



SPLIT 8 FLUTE STRETCHER UNIT

4" x 8" x 16"
6" x 8" x 16"
8" x 8" x 16"
10" x 8" x 16"
12" x 8" x 16"

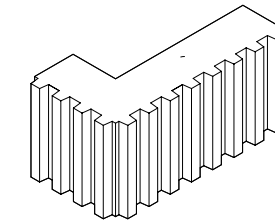
Finishes: Split Face Only



SPLIT 8 FLUTE "L" CORNER UNIT

4" x 8" x 16"

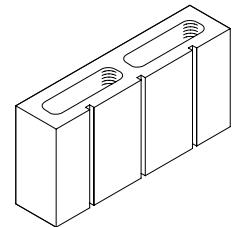
Finishes: Split Face Only



SPLIT WIDE STRETCHER UNIT

4" x 8" x 16"
6" x 8" x 16"
8" x 8" x 16"
10" x 8" x 16"
12" x 8" x 16"

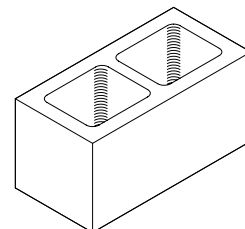
Finishes: Split Face Only



QUOIN CORNER UNIT

8" x 8" x 16"

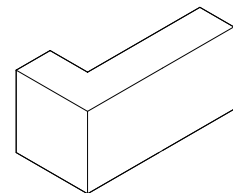
Finishes: Split, Ground, Matte, Antique



"L" CORNER UNIT

4" x 8" x 16"

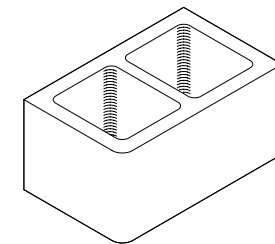
Finishes: Ground, Matte, Antique
*Can be used with any size block.



BULLNOSE STRETCHER UNIT

4" x 8" x 16"
6" x 8" x 16"
8" x 8" x 16"
10" x 8" x 16"
12" x 8" x 16"

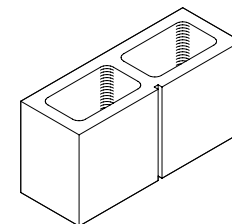
Finishes: Ground, Matte, Antique



STRETCHER WITH SCORE

4" x 8" x 16"
6" x 8" x 16"
8" x 8" x 16"
10" x 8" x 16"
12" x 8" x 16"

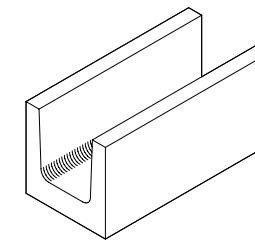
Finishes: Split, Ground, Matte, Antique



CLOSED-BOTTOM BOND BEAM UNIT

8" x 8" x 16"
12" x 8" x 16"

Finishes: Split, Ground, Matte, Antique



ARCHITECTURAL CMU GENERAL SPECIFICATIONS

The following are general guidelines only, and must be verified with individual project and manufacturer specifications. For complete specifications and instant access to our NCMA TEK Manual and other helpful information, please visit our website at www.Nitterhouse.com.

PART I - GENERAL

PRODUCT NAME

Specify exact type of **Architectural Concrete Masonry Units** required.

MANUFACTURER

Nitterhouse Masonry Products, LLC
(717) 267-4500
P. O. Box 692
859 Cleveland Avenue
Chambersburg, PA 17201

SUBMITTAL

Submit color samples for selection from manufacturer's Color Selection Kit. Submit product literature, certifications, and test reports, full size sample(s) of each color specified.

QUALITY ASSURANCE

Certifications: All loadbearing CMU comply with ASTM C90. All non-loadbearing units comply with C129. All aggregates conform to ASTM C33. All sampling and testing shall be according to ASTM C140.

DELIVERY, STORAGE & HANDLING

All CMU shall be delivered to the jobsite on stretch-wrapped wooden pallets. Protective sheets shall be used to protect the faces of the Ground Face units. Store pallets in single stacks on level ground and cover with waterproof covering (e.g. tarpaulins) to protect the blocks from inclement weather. Handle blocks carefully to avoid breakage and damage to the finished surfaces.

PART II - PRODUCTS

FINISHES

Specify exact type of finish required: (Split Face, Matte Face, Ground Face, Antique, etc.)

SIZES AND SHAPES

Specify exact sizes and shapes required. (See Shapes and Sizes on pages 14 and 15.) Also specify if finished ends, scores and chamfers are required.

INTEGRAL WATER REPELLENT

All Architectural CMU's are produced with Sika AE-3 Integral Water Repellent. Sika W-10 Mortar Admixture must be added to the mortar by the mason at a rate of 1-32 oz. bottle per 2 bags of mortar. Mortar admix must be purchased from block manufacturer.

PART III - EXECUTION

LAYING MASONRY WALLS

Lay units using the best concrete masonry practices. Install only quality units; reject any defective units. Units should include uniform 3/8" wide joints on the completed side of the wall. Draw blocks from 4 different pallets at a time during installation to maintain a more uniform wall color. Refer to NCMA TEK 3-1A for Hot and Cold weather construction practices.

INSTALLATION

Lighting: Provide adequate lighting for masonry work by placing all lighting at a reasonable distance from the wall for even illumination. Do not use trough lighting.

Cutting: Make all unit cuts with motordriven masonry saw, using either an abrasive or diamond blade. Cut neatly and locate for best appearance.

1. Lay units with full mortar coverage on head and bed joints.
2. Tool all mortar joints when thumbprint hard into a concave configuration.

3. Care should be taken to remove mortar from the face of masonry units before it sets.
4. Tuck point the joints of scored units for proper appearance.

FLASHING OF MASONRY WORK

Install flashing at locations shown in the plans and in strict accordance with the details and proper masonry flashing practices as outlined in the CONCRETE MASONRY HANDBOOK published by the Portland Cement Association.

WEEP HOLES AND VENTS

Install weep holes and vents at proper intervals (according to typical practice) at courses above grade, above flashing and at any water stops over windows, doors and beams.

PROJECT / SITE CONDITIONS

Protection of Work: Cover walls each day after installation to keep open walls protected and dry. After units are installed, they should be protected from damage by other trades performing operations that can stain or otherwise damage the finished surfaces by covering walls with plastic.

INSPECTION

The faces of all concrete masonry products shall be free from chips, cracks, crazes or any imperfections that would detract from the overall appearance of the finished wall when viewed from a distance of twenty (20) feet at right angles to the wall with normal lighting, as per ASTM C129, C90.

CLEANING

Keep walls clean during installation using brushes. Do not allow excess mortar or smears to harden on the finished surface. Harsh cleaning

methods after walls have been erected may mar the surface of the blocks. Clean masonry units within 7 to 14 days of laying the wall. Failure to do this could result in harsh methods needed to remove mortar and debris; thus, resulting in damaging the finish of the product.

SEALER

If specified or required, sealer to be field-applied by a qualified applicator. All repairs are to be completed prior to sealing of masonry units. Refer to manufacturer for preferred sealer to be used.

1. All Nitterhouse architectural masonry units are produced with integral water repellent.
2. All Nitterhouse ground face units have a factory applied 1 coat of VOC compliant acrylic sealer
3. ICON insulation inserts available upon request.
4. Recycled material can be added to any standard Nitterhouse CMU color and available in both split, ground face and antique finishes. Final color will vary from standard color due to the amount of recycled material in the batch design.

FINAL CLEANDOWN

The recommended clean down would be to use clear water and a brush. If additional cleaning is required, the use of a detergent masonry cleanser formulated for concrete masonry may be used, strictly following the manufacturer's instructions including thorough pre-wetting of the walls and thorough rinsing. **DO NOT USE** acid or abrasives on the finished surfaces. Failure to strictly follow manufacturer's instruction can result in permanent damage to the finished faces. High-pressure power washing is not recommended.

MAINTENANCE

Nitterhouse Architectural Concrete Masonry Units, properly installed and cleaned, need very little, if any future maintenance. Graffiti, paint, or stains might require the use of special cleaning agents. Contact Nitterhouse for specific cleaning recommendations.

ELITE CMU'S (FILLED & POLISHED UNITS) GROUND FACE UNITS

PART I - GENERAL

PRODUCT NAME

NMP ELITE CMU's

MANUFACTURER

Nitterhouse Masonry Products, LLC
(717) 267-4500
P. O. Box 692
859 Cleveland Avenue
Chambersburg, PA 17201

SUBMITTAL

Submit color samples for selection from manufacturer's Color Selection Kit. Submit product literature, certifications, and test reports, full size sample(s) of each color specified.

QUALITY ASSURANCE

Certifications: All loadbearing CMU comply with ASTM C90. All non-loadbearing units comply with C129. All aggregates conform to ASTM C33. All sampling and testing shall be

according to ASTM C140. All finished faces to be ground, filled with a cementitious filler, polished and sealed with a coat of VOC compliant acrylic resin sealer conforming to ASTM C744 standards.

Fire Resistance: Fire rated for up to 2 hours. See hourly ratings required by NCMA TEK Notes, available at www.nitterhouse.com.

Field Constructed Mock-ups: Construct a sample panel, no less than 4' X 4' of units of each color and size to be used in the project.

Delivery, Storage & Handling: All CMU shall be delivered to the jobsite on stretch-wrapped wooden pallets. Cover with waterproof covering (e.g. tarpaulins) to protect the blocks from inclement weather. Handle blocks carefully to avoid breakage and damage to the finished surfaces. Protective foam shall be used to protect the faces. Store pallets in single stacks on level ground.

PART II - PRODUCTS

FINISHES

Specify exact type of finish required: (Filled, polished and sealed CMU's) All finished faces to be ground, filled with a cementitious filler, polished and sealed with a coat of VOC compliant acrylic resin sealer conforming to ASTM C744 standards.)

SIZES AND SHAPES

Specify exact sizes and shapes required. (See pages 14 and 15). Also specify if finished ends, scores, and chamfers are required.

Standard finish dimensions: 7 5/8" x 15 5/8" typical

Bed depth sizes nominal: 4", 6", 8", 10", & 12".