



SPLIT FACE NM-127

SPLIT FACE FINISH

Nitterhouse's split face block is produced with a textured relief look that provides depth and dimension to each individual block while still providing superior quality and durability. Our split face block meets ASTM-C90 standard specification for loadbearing concrete masonry units and can also be used at and below grade. This product is ideal for interior and exterior facades and accent bands that will add texture and character to your project.



NM-189



A-18



A-53



NM-180



J-12



NM-197



NM-169



J-51



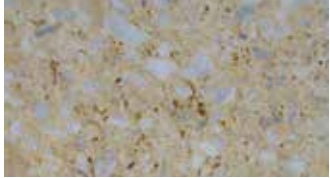
A-13



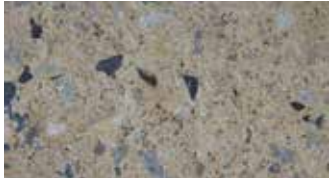
NM-191



A-41



NM-184



NM-205



NM-173



NM-144



J-90



NM-202



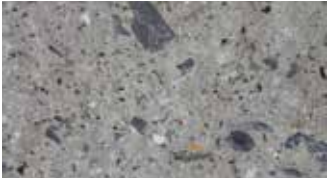
NM-41



NM-154



J-15



NM-204



NM-06



NM-152



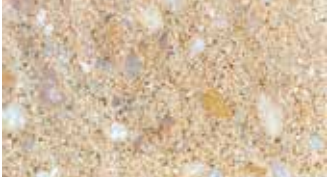
J-94



NM-35



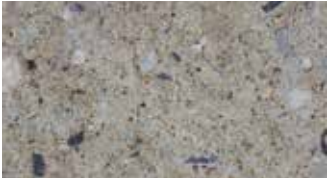
A-53



NM-141



NM-10



NM-196



NM-161



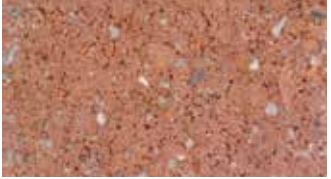
NM-209



NM-182



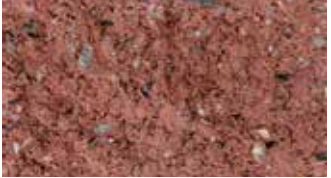
NM-127



NM-108



NM-200



NM-164



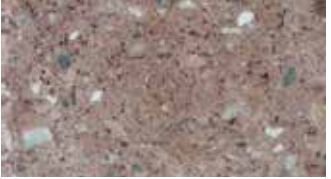
NM-199



J-92



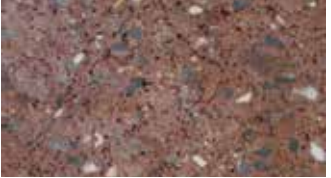
J-47



NM-166



NM-207



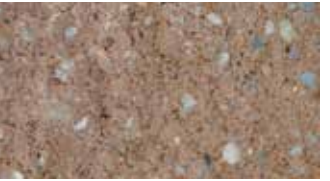
NM-135



NM-179



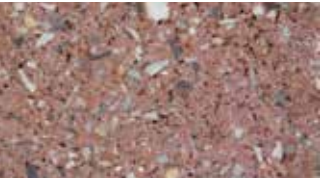
J-91



NM-206



NM-160



J-61



J-49



NM-155



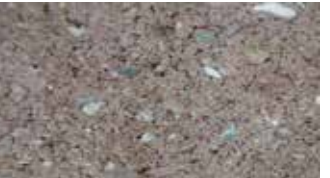
NM-172



NM-185



J-48



NM-172



NM-183



J-55



J-30

*These samples are presented as a general representation of the product. Color of pieces will vary slightly from sample. **Contact your Nitterhouse representative, 717-267-4500 for a physical sample.***

ARCHITECTURAL BLOCK SHAPES & SIZES

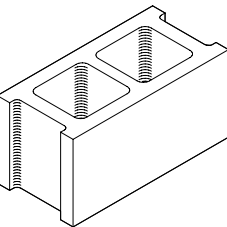
All sizes are nominal.

*Special shapes and cuts are available upon request
please contact your Nitterhouse representative*

STRETCHER UNIT

4" x 8" x 16"
6" x 8" x 16"
8" x 8" x 16"
10" x 8" x 16"
12" x 8" x 16"

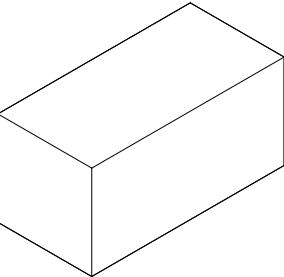
Finishes: Split, Ground, Matte, Antique



SOLID UNIT

4"x 4"x 24" 6"x 8" x 16"
4"x 8" 24" 8"x 8" x 16"
4"x 12" x 24" 10" x 8" x 16"
4" x 8" x 16" 12" x 8" x 16"

Finishes: Split, Ground, Matte, Antique

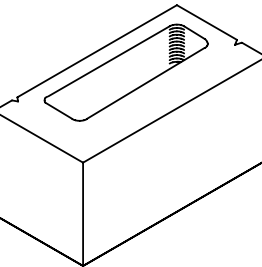


UNIVERSAL CORNER UNIT

8" x 8" x 16"

Finishes: Split Face Only

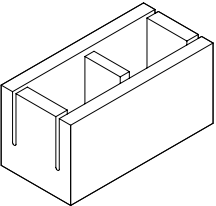
*Can be converted to a 4"x 8" x 16"
Split face "L" corner at the job site



OPEN-BOTTOM BOND BEAM UNIT

4" x 8" x 16"
6" x 8" x 16"
8" x 8" x 16"
10" x 8" x 16"
12" x 8" x 16"

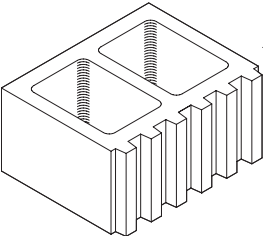
Finishes: Split, Ground, Matte, Antique



SPLIT 6 FLUTE STRETCHER UNIT

4" x 8" x 16"
6" x 8" x 16"
8" x 8" x 16"
10" x 8" x 16"
12" x 8" x 16"

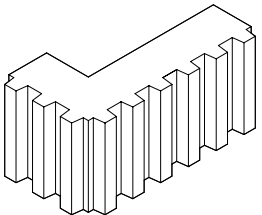
Finishes: Split Face Only



SPLIT 6 FLUTE "L": CORNER UNIT

4" x 8" x 16"

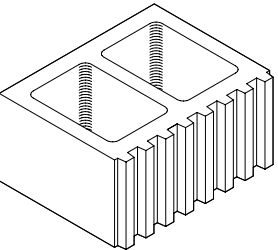
Finishes: Split Face Only



SPLIT 8 FLUTE STRETCHER UNIT

4" x 8" x 16"
6" x 8" x 16"
8" x 8" x 16"
10" x 8" x 16"
12" x 8" x 16"

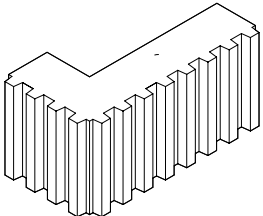
Finishes: Split Face Only



SPLIT 8 FLUTE "L" CORNER UNIT

4" x 8" x 16"

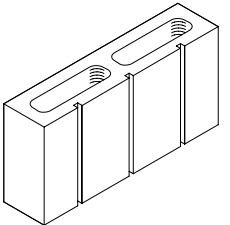
Finishes: Split Face Only



SPLIT WIDE STRETCHER UNIT

4" x 8" x 16"
6" x 8" x 16"
8" x 8" x 16"
10" x 8" x 16"
12" x 8" x 16"

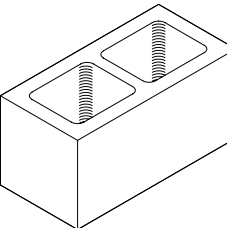
Finishes: Split Face Only



QUOIN CORNER UNIT

8" x 8" x 16"

Finishes: Split, Ground, Matte, Antique

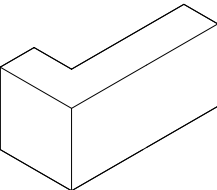


"L" CORNER UNIT

4" x 8" x 16"

Finishes: Ground, Matte, Antique

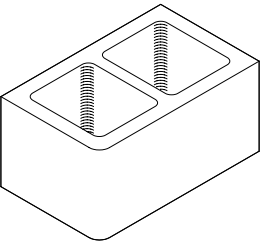
*Can be used with any size block.



BULLNOSE STRETCHER UNIT

4" x 8" x 16"
6" x 8" x 16"
8" x 8" x 16"
10" x 8" x 16"
12" x 8" x 16"

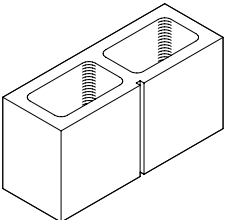
Finishes: Ground, Matte, Antique



STRETCHER WITH SCORE

4" x 8" x 16"
6" x 8" x 16"
8" x 8" x 16"
10" x 8" x 16"
12" x 8" x 16"

Finishes: Split, Ground, Matte, Antique



CLOSED-BOTTOM BOND BEAM UNIT

8" x 8" x 16"
12" x 8" x 16"

Finishes: Split, Ground, Matte, Antique

