



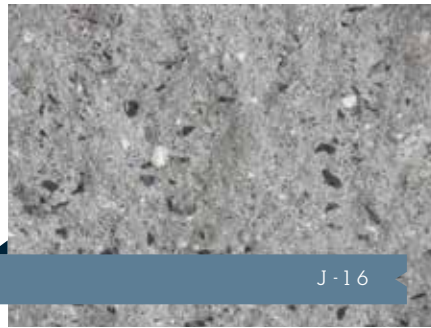
Potential LEED® Credit Contribution for Concrete Masonry		
LEED® Category	Materials & Resources	Materials & Resources
LEED® Credit	Recycled Content	Regional Materials
	MR Credit 4.1/4.2	MR Credit 5.1/ 5.2
Description	Pre-Consumer Recycled Content	Regionally Extracted, Process & Manufactured within 500 miles of project site
LEED® Points	1-2 points	1-2 points
Recycled CMU	•	•
Split Face CMU		•
Ground Face CMU		•
Antique CMU		•
Elite		•
Legacy Textured		•
Legacy Terrazzo		•

P H O T O

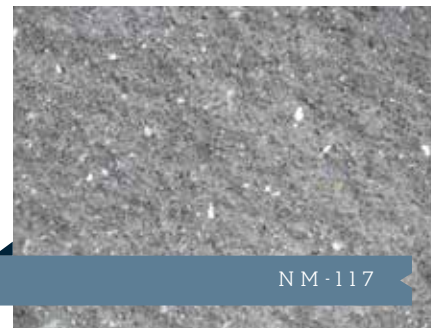
Shippensburg Emergency Services Building & Vigilant Hose Company No.1
 Shippensburg, PA
 Colors: NM-122 & J-16



A-13



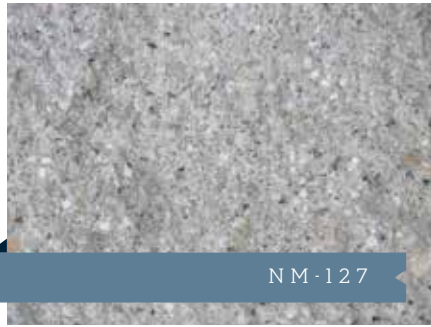
J-16



NM-117



NM-122



NM-127

“ECO-SMART” RECYCLED CMU

AT LEAST 30% RECYCLED MATERIAL

Nitterhouse’s “Eco-Smart” architectural CMU’s are manufactured with at least 30% recycled material and are produced in our standard ground face and split face finishes. The percentage of recycled material used can be increased if desired or added to any color of our regular CMU block. All block meets or exceeds ASTM-C90 specifications and can be used both at and below grade. Note: Colors will vary, especially in the lighter shades due to the recycled materials used to make this product.